

Promo & Print Co.

BRANDING SOLUTIONS



promoandprintco.com.au

DIGITAL AND WIDE FORMAT PRINT GUIDE



PRINT & STATIONERY	4
LETTERBOX MARKETING	6
DIRECT MAIL & CUSTOM BRANDING	8
DIRECT MARKETING	10
PRINT MARKETING	12
WIDE FORMAT PRINT	14
CONTACT US	20

PRINT & STATIONERY

Did you know

94%

of marketing
campaigns include
drink ware.

BUSINESS CARDS

We all enjoy professional looking Business Cards which are a great branding opportunity. Even if you sell online, it is important to include your card with every sale delivery.

SUGGESTED STOCK

- 350-450gsm Artboard

FINISHING & OPTIONS

- Gloss or Matt Laminate
- Unlaminated
- New Velvet Laminate
- Scodix
- Metal Finish



MARKETING CARDS

Marketing cards are essential and worth the investment for your business. They are a quick and efficient way to get your message across.

SUGGESTED STOCK

- 350-450gsm Artboard
- 350gsm Coated 1 Sided Board

FINISHING & OPTIONS

- Gloss or Matt Laminate
- Unlaminated
- New Velvet Laminate
- Scodix
- Metal Finish

PRESENTATION FOLDERS

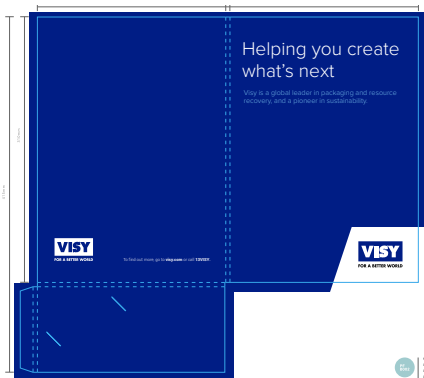
Presentation Folders come in a wide variety of styles – designed to carry a few inserts or a full conference kit – made from durable card.

SUGGESTED STOCK

- 350gsm Artboard

FINISHING & OPTIONS

- Gloss or Matt Laminate
- Unlaminated
- Die Cut to and Scored to Shape
- Scodix
- Metal Finish



BRANDED ENVELOPES

Envelopes can be printed on the front and back depending on which side is more suitable. Available in all standard sizes with a range of glue flap options.

SUGGESTED STOCK

- Tudor Envelope Range

FINISHING & OPTIONS

- Variety of Glue Flap Options
- Window or Non-Window

COMPLIMENT SLIPS

These will normally be of the same stock as your letterhead. They allow a good branding opportunity for a business with an eye for quality.

SUGGESTED STOCK

- 100gsm Laser

FINISHING & OPTIONS

- Printed on the reverse side



LETTERBOX MARKETING

Did you know

90%

of people value
hard copy mail
over social
media.

TENT CARDS

Designed specifically for counter and table tops or for when there is limited space. Tent Cards are stylish table talkers which can be ordered in a range of sizes.

SUGGESTED STOCK

- 350gsm Artboard

FINISHING & OPTIONS

- Gloss or Matt Laminate
- Unlaminated
- Die Cut to Shape
- Scodix



TABLE MENUS

Table menus that have been well executed and essential. Including photos of your signature dishes can make the decision process easier for customers.

SUGGESTED STOCK

- 350gsm Artboard

FINISHING & OPTIONS

- Gloss or Matt Laminate
- Unlaminated
- Scodix
- Scored
- Metal Finish

BOOKMARKS

Bookmarks are the perfect giveaway for bookshops, newsagents or self-publishers. Utilise this space by promoting special offers.

SUGGESTED STOCK

- 350gsm Artboard

FINISHING & OPTIONS

- Gloss or Matt Laminate
- Unlaminated
- Scodix
- Metal Finish



GREETINGS CARDS

Greeting Cards can be used for multiple different purposes. They are a more personal option for your business.

SUGGESTED STOCK

- 350gsm Artboard

FINISHING & OPTIONS

- Gloss or Matt Laminate
- Unlaminated
- Scored
- Scodix Clear
- Metal Finish

INVITATIONS

Invitations serve such a varied purpose and are essential when planning events big or small.

SUGGESTED STOCK

- 350gsm Artboard

FINISHING OPTIONS

- Gloss or Matt Laminate
- Unlaminated
- Scodix
- Metal Finish



DIRECT MAIL & CUSTOM BRANDING

Did you know

70%

of consumers
say direct
mail is more
personalised
than online
interactions.

BROCHURES & LEAFLETS

A well-designed brochure or leaflet is important when advertising your business. They are best printed in full colour.

SUGGESTED STOCK

- 115gsm Coated
- 150gsm Coated

FINISHING & OPTIONS

- Folded or Scored
- Perforated



TAKEAWAY MENUS

An aesthetic takeaway menu is crucial because it serves two purposes, to advertise and to inform.

SUGGESTED STOCK

- 115gsm Coated
- 150gsm Coated

FINISHING & OPTIONS

- Folded or Scored
- Perforated



FOLDED DL LEAFLETS

Folded DL Leaflets work well for both mail drops and newspaper and magazine inserts.

SUGGESTED STOCK

- 115gsm Coated
- 150gsm Coated

FINISHING & OPTIONS

- Folded or Scored



BRANDED DESK PADS

Branded Desk Pads are ideal as give-aways. They are available in various sizes from A5-A2.

SUGGESTED STOCK

- 100gsm Laser

FINISHING OPTIONS

- Edge Padded 1 or 2 Sides

LETTERHEADS & FOLLOWERS

Letterheads on quality laser stock help you stand out from your competitors. UV Printed colour ensures that your logo and branded colours look clean and vibrant.

SUGGESTED STOCK

- 100gsm Laser

FINISHING & OPTIONS

- Printed on reverse side



DIRECT MARKETING

Did you know

77%

of Millennial's
recognise
direct
advertising.

PROMOTIONAL CALENDARS

PROMOTIONAL CALENDARS

Promotional Calendars are still extremely popular. To create a great calendar functionality, design and finish are very important. There are many styles to choose from including tent, wire bound, or saddle stitched.

SUGGESTED STOCK

- 150gsm - 250gsm Coated
- 350gsm Artboard

FINISHING & OPTIONS

- Gloss or Matt Laminate
- Unlaminated



DRINK COASTERS

Drink Coasters can promote almost anything from boutique beer to fundraising events and everything in between.

SUGGESTED STOCK

- 390gsm Beermat Board

FINISHING & OPTIONS

- Die Cut
- Round Cornered
- Circular

DOOR / BIN HANGERS

Door and Bin Hangers can be used for a variety of promotional and informational reasons.

SUGGESTED STOCK

- 350gsm Artboard

FINISHING & OPTIONS

- Gloss or Matt Laminate
- Unlaminated
- Die Cut to Shape



FRIDGE MAGNETS

Fridge Magnets are a good promotional option to advertise home services, trade services, estate agent and health professionals.

FINISHING & OPTIONS

- Gloss Laminated to 1 Side

SHELF WOBBLERS

Shelf Wobblers are designed to draw attention to specific items on display. They can be printed on one side and can be square or die cut to shape.

SUGGESTED STOCK

- 250gsm Coated

FINISHING & OPTIONS

- Gloss or Matt Laminate
- Unlaminated
- Die Cut to Shape
- Apply Double Sided Tape



PRINT MARKETING

Did you know

94%

of print readers
discuss what
they read in
magazines or
newspapers.

MAGNETIC VEHICLE SIGNS

Magnetic Removable Vehicle Signs tick all the boxes. They allow you to promote your business for free.

FEATURES & OPTIONS

- Cut to Shape



BUMPER STICKERS

Best for advertising a message on a vehicle. Size is important to ensure legibility for fellow motorists.

FEATURES & OPTIONS

- Gloss or Matt Lamination
- Cut to Shape

FLOOR GRAPHICS

Floor Graphics are very useful to direct people to promotional areas in shops or at exhibitions. Durable solvent inks are used as they can stand high volumes of traffic. They are easy to install and remove.

FEATURES & OPTIONS

- Cut to shape
- Easy to Apply
- Non Slip Laminate
- Print 1 Side Only

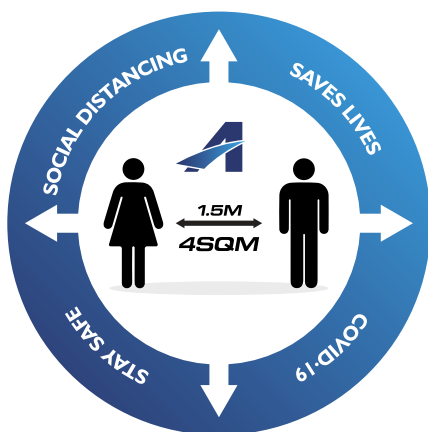


BACK LIT DISPLAYS

Back-lit Displays are created to be illuminated from the back. They are printed on a white translucent stock allowing excellent illumination of colour for maximum impact.

FEATURES & OPTIONS

- Print 1 Side Only



WIDE FORMAT PRINT

Did you know

82%

of people recall
brand names
from paper as
opposed to 42%
remembering
from email.

A FRAMES & A FRAME SIGN FLUTE

Help drive more foot traffic. A Frames are a great way to substitute messages such as special offers.

VIEWABLE PANEL SIZES

- 560 x 860

PRODUCT DETAILS & OPTIONS

- Sturdy Steel Frame
- Easy Swap Inserts
- Includes 2 Corflute Inserts
- Black and White Frame Options



BOLLARDS WRAPS

Well positioned Bollard Wraps will help to ensure your message stands out in a busy location with competing signage.

VIEWABLE PANEL SIZES

- 380 x 1000

PRODUCT DETAILS & OPTIONS

- Weather Resistant Corflute
- Arrives Flat for Fast Assembly
- 3 Viewable Panels

WALLPAPER GRAPHICS

Create an imaginative design that represents your business perfectly. Supply us with your requirements and we will do all the work for you.

FEATURES & OPTIONS

- Removable Wall Graphics
- Permanent Wall Graphics
- Vinyls & Fabrics
- Cut to Shape



POSTERS AT ANY SIZE

Paper Posters are an extremely cost-effective promotional tool.

FEATURES & OPTIONS

- Cut to shape
- Hanging hooks

REPOSITIONABLE VINYL

High quality and durable. Repositionable Vinyl is easy to reposition whenever you need to. We provide full colour on clear or white. Clear substrates are the most striking on windows and mirrors.

FEATURES & OPTIONS

- Cut to Shape
- Face Cutting



WINDOW GRAPHICS

Window Graphics can be printed on one or both sides of the window. Various colours and sizes are available for a wide range of budgets.

FEATURES & OPTIONS

- Cut to Shape
- Hanging Hooks
- Hanging Clips



WIDE FORMAT PRINT

Did you know

82%

of people recall
brand names
from paper as
opposed to 42%
remembering
from email.

PULL UP BANNERS

Single-sided lightweight pull up banners are an exceptional portable promotional tool you can take with you anywhere.

BANNER SIZES

- 850 x 2000
- 1000 x 2200
- 600 x 1600

PRODUCT DETAILS & OPTIONS

- Lightweight - Quality silver aluminium light weight base with fold out feet [approx. 3kg]
- Premium - Streamline weighted base [approx. 6kg]
- Full colour digital print on curl resistant polypropylene
- Supplied with padded carry bag



STANDARD STICKERS

Stickers are an affordable and effective promotional tool. Stickers can be printed in a range of custom sizes. Stickers can also be placed on specific promo and apparel.

PRODUCT DETAILS & OPTIONS

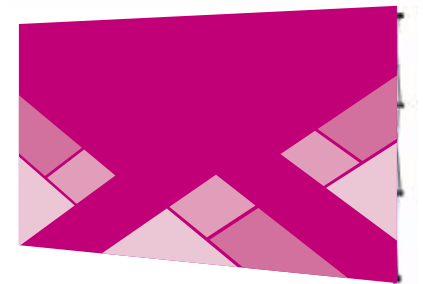
- Full colour digital print on 130GSM

OUTDOOR SIGNAGE

Outdoor signage can be used for directional, safety or promotional purposes. Signage contributed to the look and feel of a place.

PRODUCT DETAILS & OPTIONS

- Includes: Panel Board/ Corflute/Foam Board/Pal Board
- Custom sizes, however each board is standard at 2400mm X 1200mm



MEDIA WALL

A media wall is a perfect professional backdrop for your media event or trade show and provides a high quality finish.

PRODUCT DETAILS & OPTIONS

- Wrap around printed sides available
- Dye sublimated print on high quality 240GSM knitted polyester
- Graphics are attached to the aluminium frame with Velcro
- Assemble and disassemble in minutes
- Total weight of frame and print approx. 10kg
- Supplied with carry bag

TABLE CLOTH

A branded table cover can transform a table into a stylish centerpiece for an exhibition or for your office.

PRODUCT DETAILS & OPTIONS

- Available in drape or fitted style
- Full colour dye sublimation on



WIDE FORMAT PRINT

Did you know

82%

of people recall
brand names
from paper as
opposed to 42%
remembering
from email.

LIGHTBOX

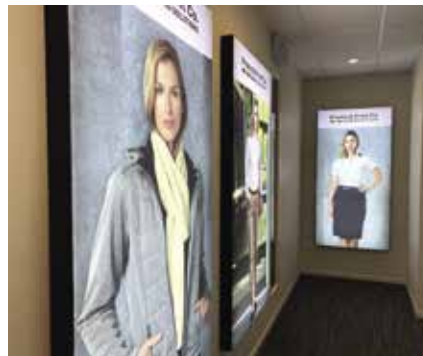
Light boxes are great for trade shows, presentations, displays, shop windows and shopping malls.

SIZE OPTIONS

- 992mm x 1984mm
- 1984mm x 1984mm
- 1984mm x 2480mm

PRODUCT DETAILS & OPTIONS

- Light weight aluminium frame for easy assembly
- Carry bag for travel and storage
- Full colour double sided dye



Welcome Mat

Floor mats are a great way to welcome customers to your business and ensure your floors are kept clean and safe.

SIZE OPTIONS

- 60cm x 90cm
- 80cm x 80cm
- 85cm x 115cm
- 85cm x 150cm
- 120cm x 180cm
- 150cm x 200cm
- 150cm x 240cm
- 180cm x 180cm

PRODUCT DETAILS & OPTIONS

- High-Twist Nylon (100 % Polyamide 6.6), pile weight of 690 g/m²
- Backing: Nitrile rubber approx. 1.5 mm thick
- Water absorption: approx. 3 Litre/m²

MESH BANNER FENCE

Mesh banner fences are cost effective and able to cover lengths of fencing on large or small developments.

PRODUCT DETAILS & OPTIONS

- Digitally printed
- Min length 10 metres, welded grommets every 75cm



Breeze Barrier

Breeze barriers are great for use in cafe/restaurant alfresco areas or for other barrier uses. By customizing a barrier cover with your logo to get more exposure for your brand.

SIZE OPTIONS

- 1040mm x 915mm [graphic area 900mm x 710mm, plus 65mm black outer sleeve]
- 2040mm x 915mm [graphic area 1900mm x 710mm, plus 65mm black outer sleeve]

PRODUCT DETAILS & OPTIONS

- Digitally printed
- Min length 10 metres, welded grommets every 75cm

PROMOTIONS.



PRINT.



SIGNAGE.



APPAREL.

CAN'T FIND WHAT YOU'RE LOOKING FOR?

Get in touch and we can help you find a solution.

Promo & Print Co.
BRANDING SOLUTIONS

Jess Spence

jess@promoandprintco.com.au

07 3667 9933